



Logistics-as-a-Service

Company Presentation

Agenda

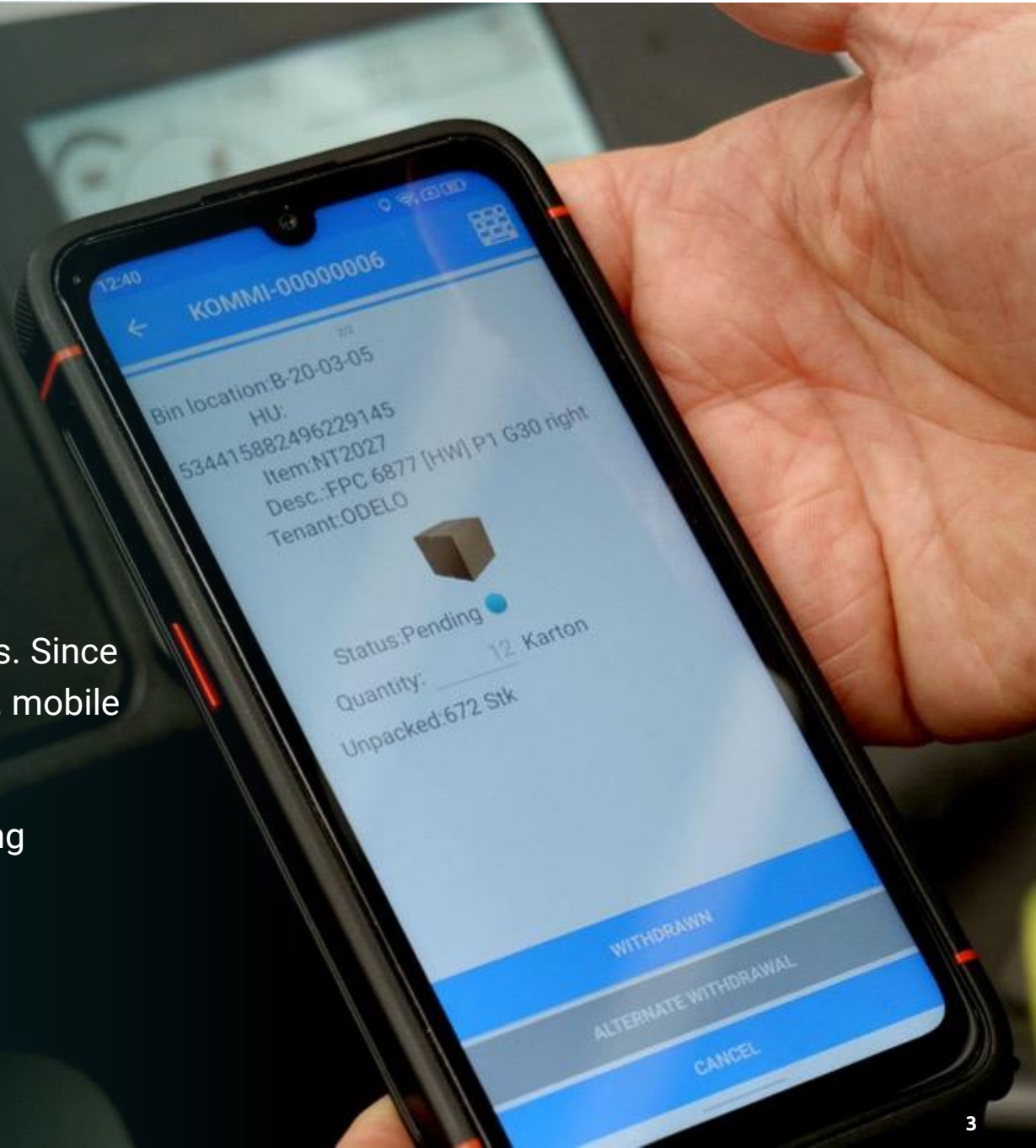
1. About Bitergo
2. Products & Services
3. Bitergo WMS
4. Real-time Visibility – Connect2track

About us

Bitergo offers comprehensive software solutions and consulting services for all aspects of logistics. Its focus is on **warehouse management, warehouse automation and real-time visibility.**

Bitergo was founded in 2013 with a clear vision: to rethink logistics. Since then, we have established ourselves as a provider of standardized, mobile cloud solutions for logistics.

Since 2025, Bitergo has been part of DSV, one of the world's leading logistics groups.



Portfolio

warehouse management



Bitergo WMS



Cloud Software for the supply chain

real-time visibility



Bitergo RTV

connect2track

Ensure shipment monitoring and condition control with confidence.

Bitergo Warehouse Management

warehouse management



Bitergo WMS

warehouse management

Cloud Software for Warehouse Management

- Ready to go within a few days
- Ready for future: Grows with your needs
- Server located in Germany
- Free 30 days trial

More Efficiency, more Productivity

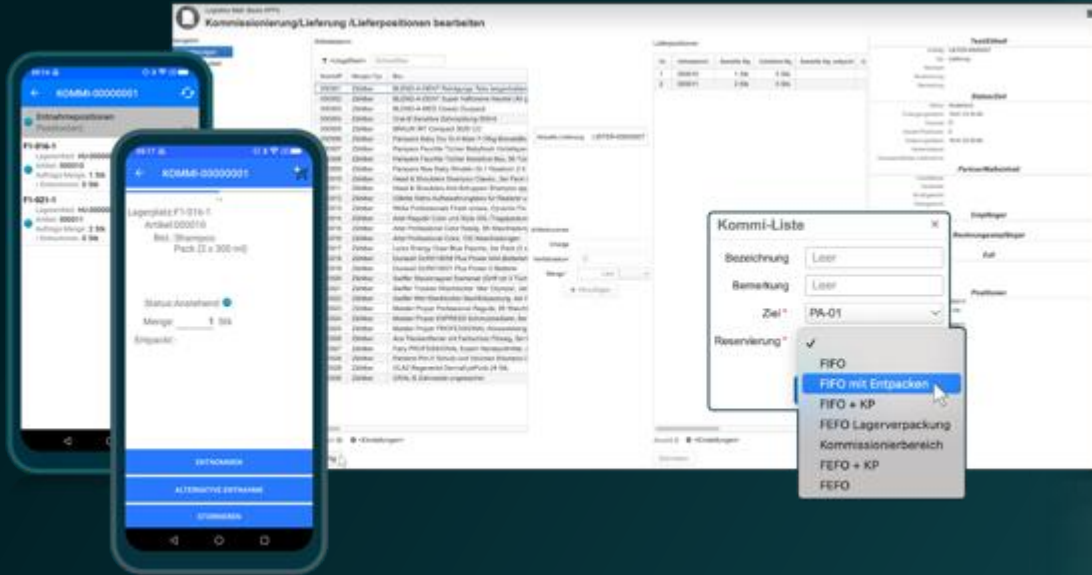
The Bitergo WMS improves efficiency and productivity in your warehouse. Because Bitergo WMS digitalizes the entire process in the warehouse.

- | | | | | |
|----------------------|---------------|----------------|--------------------|------------------------|
| Incoming Goods | Storage | Repacking | Picking | Stock Management |
| Real-time Withdrawal | Pick and Pack | Outgoing Goods | Inventory Counting | Warehouse Optimization |



Bitergo WMS

warehouse management



Become productive quickly and easily

With Bitergo WMS, you can digitize your entire warehouse in just a few days. This makes Bitergo WMS particularly attractive for start-ups and small and medium-sized enterprises.

Developed for daily Practice

We develop Bitergo WMS together with professional partners from the supply chain industry and renowned research institutes. You benefit from this in daily use and in the strategic development of your supply chain.

Grows with you

Interfaces to common e-commerce platforms and ERP systems ensure smooth workflows. Our modular app ecosystem maps your requirements, even if you scale quickly.

Partner Network for special Challenges

We greatly value the cooperation with our customers and partners. It guarantees that we also map future requirements intelligently and practically.

Bitergo WMS

warehouse management

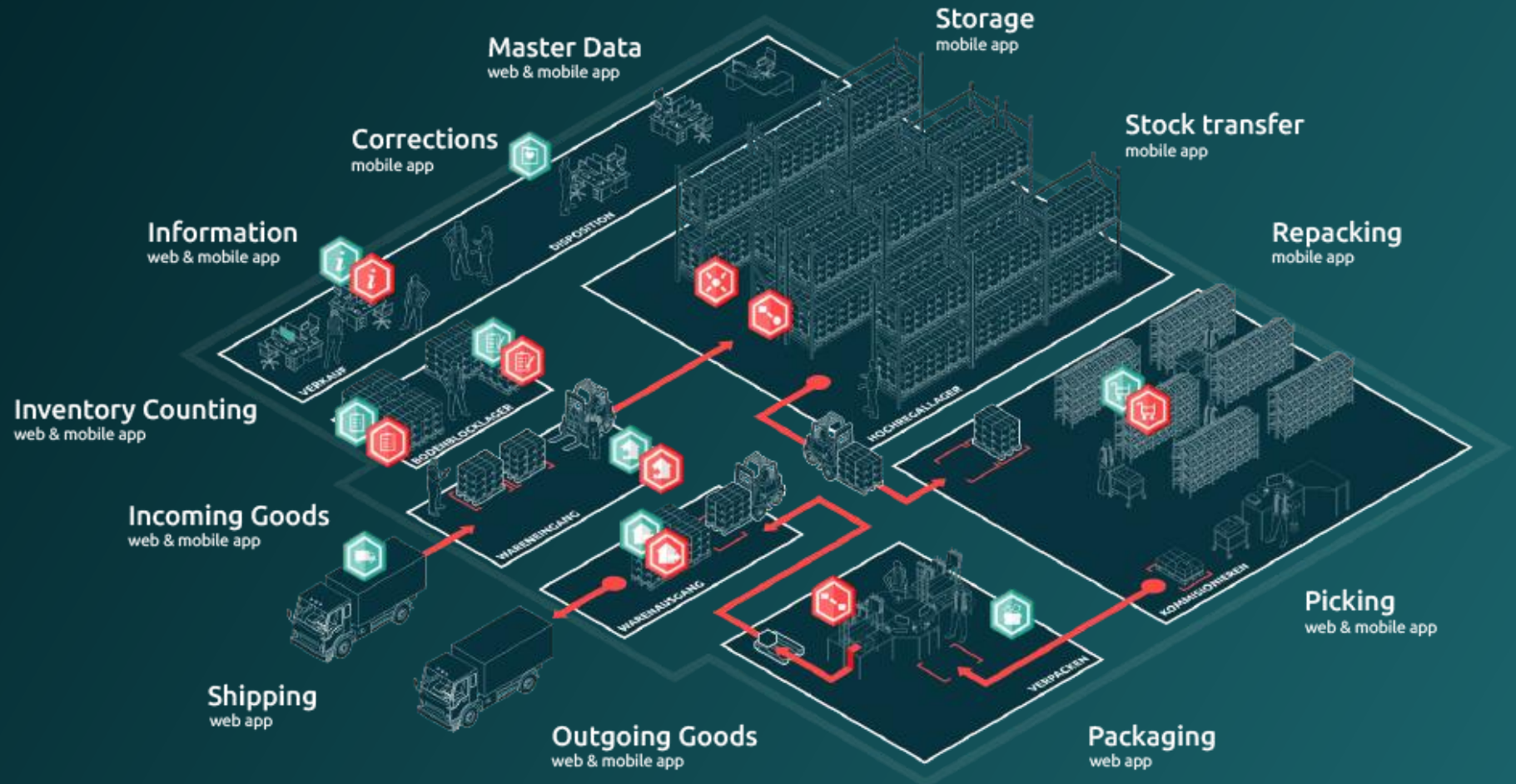
Bitergo WMS consists of flexible, interconnected apps with ergonomic user interfaces for mobile devices and for the web browser.

Main Functions

- Batch management
- Serial number management
- Best before dates integration
- Replenishment management
- Cross Dock
- Multi-client capability
- Load support management
- Value Added Services
- Individually definable packaging
- Master data import via Excel
- Open interface via REST-API

Additional Functions

- Multiple warehouse capability
- Multi-depth storage
- SAP and EDI connection
- Forklift control system
- Vendor Managed Inventory
- Customs



Bitergo WMS

warehouse management



Master Data Web & Mobile App

Gain complete visibility into your warehouse! The **Master Data App** ensures accurate, comprehensive, and precise representation of master data in your Warehouse Management System.



Order Picking Web & Mobile App

Eliminate the most common reasons for complaints: With the **Order Picking App**, you ensure the quality of your picked deliveries while simultaneously accelerating the picking process.



Incoming Goods Web & Mobile App

Take control of the rush hour at the reception of your goods: With the **Incoming Goods App**, you won't keep drivers and suppliers waiting unnecessarily, ensuring a smooth flow at the loading docks.



Storage Mobile App

Optimize the receipt of your goods and revolutionize your warehouse management: The **Storage App** ensures that delivered goods find their designated storage space efficiently and precisely.

Bitergo WMS

warehouse management



Stock Transfer Mobile App

No chaos after rearranging: There can be various reasons for relocating goods. With the **Stock Transfer App**, the storage locations in your Warehouse Management System stay up-to-date and transparent.



Repacking Mobile App

Maximize your warehouse space with our **Mobile App Repacking**.



Packaging Web App

The **Web App Packaging** revolutionizes your logistics processes. Benefit from precise and time-saving packaging for error-free outbound operations.



Outgoing Goods Web & Mobile App

No backlog in goods dispatch: Goods can leave the warehouse on time, as the required documentation is swiftly and flexibly handled with the **Outgoing Goods App**.

Bitergo WMS

warehouse management



Shipping Web App

Say goodbye to long waiting times: With the **Web App Shipping**, packed goods leave your warehouse in the blink of an eye.



Corrections Mobile App

With the **Corrections App**, you always have a clear view of current warehouse changes and receive real-time updates through your Warehouse Management System.



Inventory Counting Web & Mobile App

Transparency, security, and a precise planning foundation: With the **Inventory Counting App**, the tedious inventory process will no longer be a hassle.



Information Web & Mobile App

Have you ever experienced the frustrating uncertainty of unclear stock levels? The costly time spent in the warehouse just to locate an item. We understand your challenges and have the perfect solution for you! With the **Web & Mobile App Information**, you always have the article stocks and booking data of your warehouse at your fingertips - whether in the office, in the warehouse, or on the go!

Bitergo Warehouse Automation

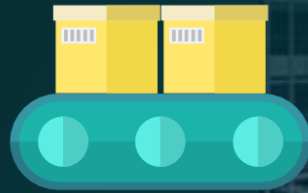
warehouse management

Our Products optimize your Materials and Time Management



Warehouse Management & Distribution

This module takes care of the coordination of all material movements – from incoming goods to outgoing goods.



Material Flow Computer

This controls the shipments in the automated material handling areas of large systems with a high degree of reliability, and ensures continuous optimisation of all shipments.



Production Control & Logistics

This module organises the internal material flow in such a way that the chronological sequence of the work processes is adhered to without disruption through the supply of materials and resources.

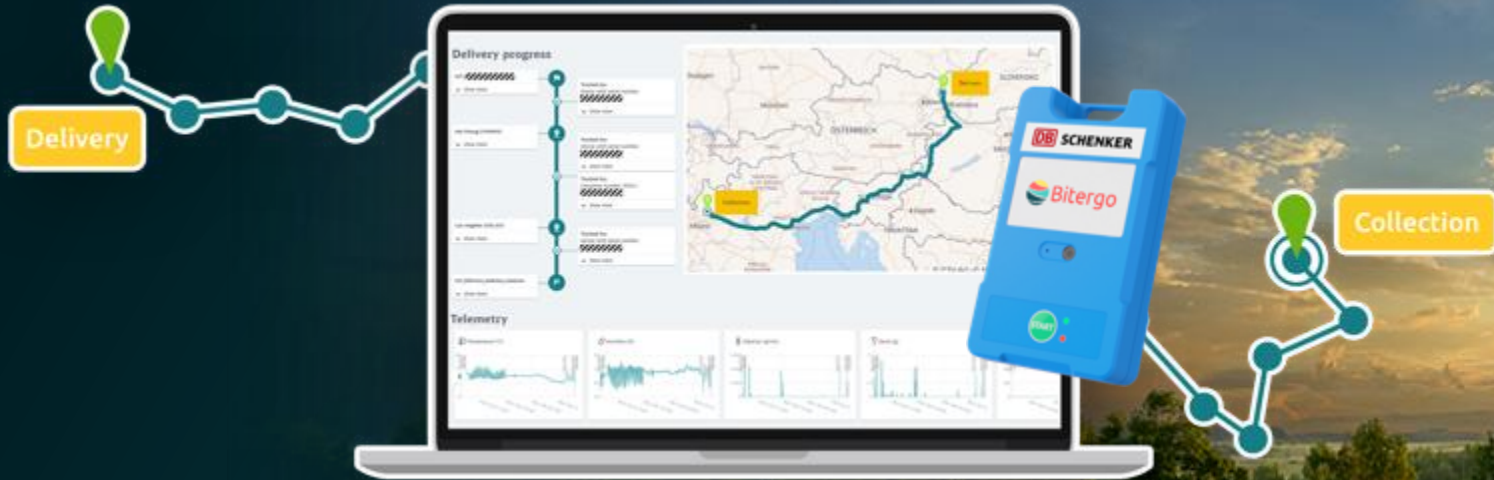


Large display

Large displays are used in production and logistics areas. They serve to provide the workers on site with quick information over large distances. Large displays have no control elements, but are controlled by external events from the server.

Bitergo Real-time Visibility

real-time visibility



Bitergo RTV – connect2track

real-time visibility



Ensure shipment monitoring and condition control with confidence:


With connect2track, you have full transparency over all movements in your Supply Chain.

 Seamless Visibility

 Live-Tracking of Deliveries

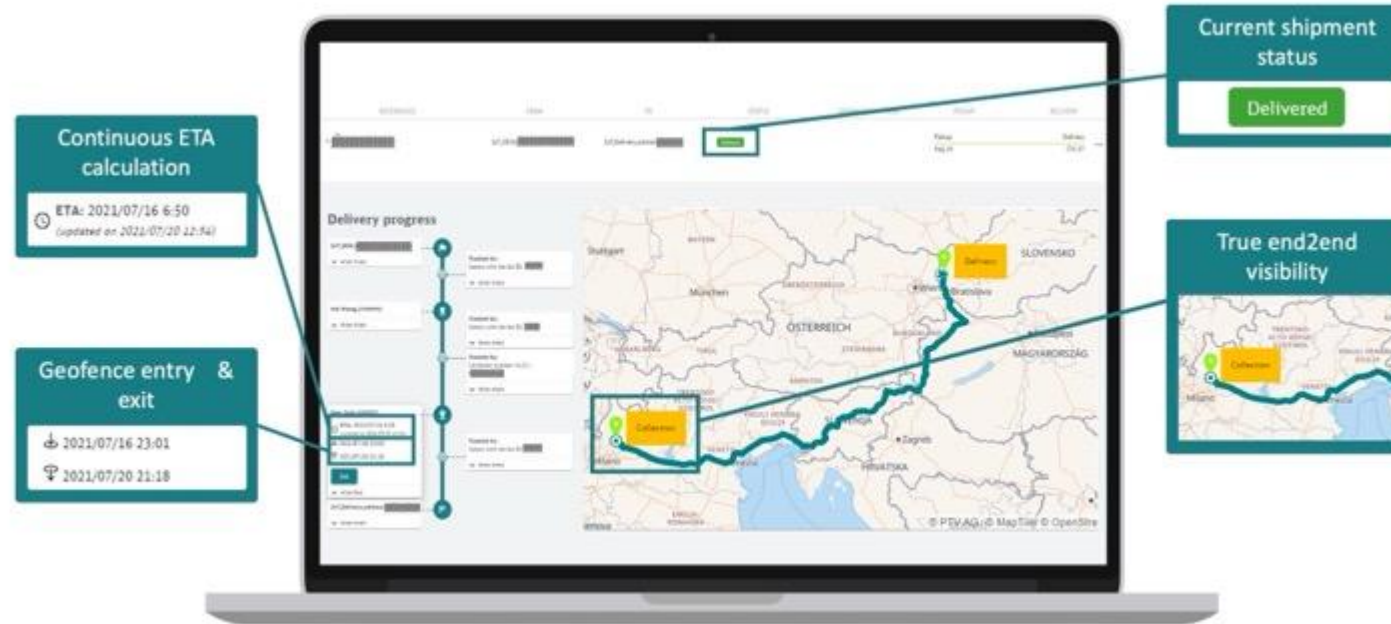
 Transparent state of Deliveries

 Enhanced Security

 Optimal technical Equipment

connect2track – Your Benefits

real-time visibility



Seamless Visibility

24/7 availability of tracking data along the supply chain. Combination of different data sources such as onboard units, IoT devices or vehicle position in a seamless overview.

Live-Tracking of Deliveries

Keep an eye on the exact locations of your consignments in real time and receive an estimated time of arrival at the destination. Benefit from automatic, location-based notifications.

Transparent State of Deliveries

Use condition monitoring for sensitive and valuable goods. The current transport conditions such as temperature, humidity and mechanical stress can be called up at any time.

connect2track – Your Benefits

real-time visibility

Info about alerts through the transport

E-mail alert when the condition is outside a designated range

ALERT	TIMESTAMP	VALUE	ACCEPTED RANGE	LOCATION
Temperature alert Temperature	2021/03/24 6:43	14.88 °C	15 °C - 25 °C	-6.12 °C

Temperature deviations are marked on the graph

Telemetry data at one glance

Enhanced Security:

Meet the highest standards with live tracking and monitoring of container doors using light sensors, including automated alarm notifications. Transport damage-prone, valuable and particularly theft-prone goods safely to their destination.

Optimal technical Equipment

Receive tracking devices from us that exactly match your requirements. We take care of the provision and integration of the appropriate devices.

connect²track – Functions and Features

real-time visibility



Location Tracking

See at any time where your delivery is located.

Allround-Tracking Device

The V-Type Tracking Device is a flexible, multifunctional tracking device. It manages a variety of sensor data such as location, temperature, humidity, light, shocks and door openings – ideally suited for a wide range of transport applications including pharmaceuticals (3-point calibration). It is easy to install and recyclable.

Condition Monitoring

Keep an eye on the condition of the goods. Settings and sensors can be customised. Monitoring is carried out using telemetric data such as temperature, humidity and vibrations.

Alerts via E-mail

Receive notifications as soon as the status of the delivery changes or a location specified by you has been reached (geofencing).

ETA Calculations

The estimated time of arrival of the delivery is continuously recalculated.

Monitoring of the Container Doors

You will receive a notification as soon as a container door is opened.

connect²track – The V-Type Tracking Device

real-time visibility



Sensors

- **Light**
Light values can be measured up to 83.000 lux
- **Temperature**
Operating range: -20 °C to 60 °C
Accuracy: ±0,5 °C NIST traceable
- **Humidity**
Accuracy: ±2% RH
- **Shock**
3-dimensional shock detection up to 8 g
- **Tracking**
Cellular, GPS, WiFi location tracking

Battery

- 2.600 mAh Li-ion rechargeable with Micro-USB
- Over 39 days at 1 hour transmission frequency

Transmission Type

Cellular

Cellular Connectivity

- LTE - M, fallback to GSM (2G)
- EGPRS

Mounting

Free mounting, next to the door

Dimensions

96 x 58 x 19,5 mm

Weight

100 g

IP Rating

67

Certifications & Approvals

- FCC
- CE
- RoHS
- EAC
- CCC
- SRRC
- UN38.3
- RTCA DO160G

Testimonials



WMS

Our aim is to be well positioned both technologically and strategically. With Bitergo WMS, we are setting a first milestone towards achieving this goal.

Hakan Efe – Head of Contract Logistics



EDI

We are using several logistics companies to execute our transport orders. With the Bitergo EDI-solution, we now have full transparency on all of our transport orders at any time, no matter who is executing the shipment. This allows us to share this visibility with our customers to support their operational planning.

Sonja Neif - Head of Supply Chain Management - Europe



WMS

Bitergo WMS was implemented quickly because we were able to put the system into operation on-site and remotely. This was easy to do because all the processes required could be implemented by using the standard functionality of Bitergo WMS.

Olaf Müller - Team Lead Solution Design



EDI

STIHL's Dieburg sales centre has carried out several ERP system changes since 2007, from WWS/400 to SAP R/3 to SAP S/4 Hana. Bitergo has actively supported the tests and implemented every system changeover without any problems.

Jürgen Brandl – STIHL Vertriebszentrale



Testimonials

”

WMS

For the type of business there was no software tool in use at the branch to handle operations of that kind appropriately. Luckily, the Bitergo WMS could be used completely out-of-the-box with no individual adaptations at all!

Jörg Abt - Manager Gateway Südwest

”

WMS

EDI

The digitalization of our order processing with the Bitergo WMS saves us a lot of time and therefore money. The fabric rolls are now recorded quickly and easily digitally using an app. Connecting the WMS to our ERP system makes order invoicing much easier.

Sven Kukereit – RHEGARTEX Wohnkultur



”

WMS

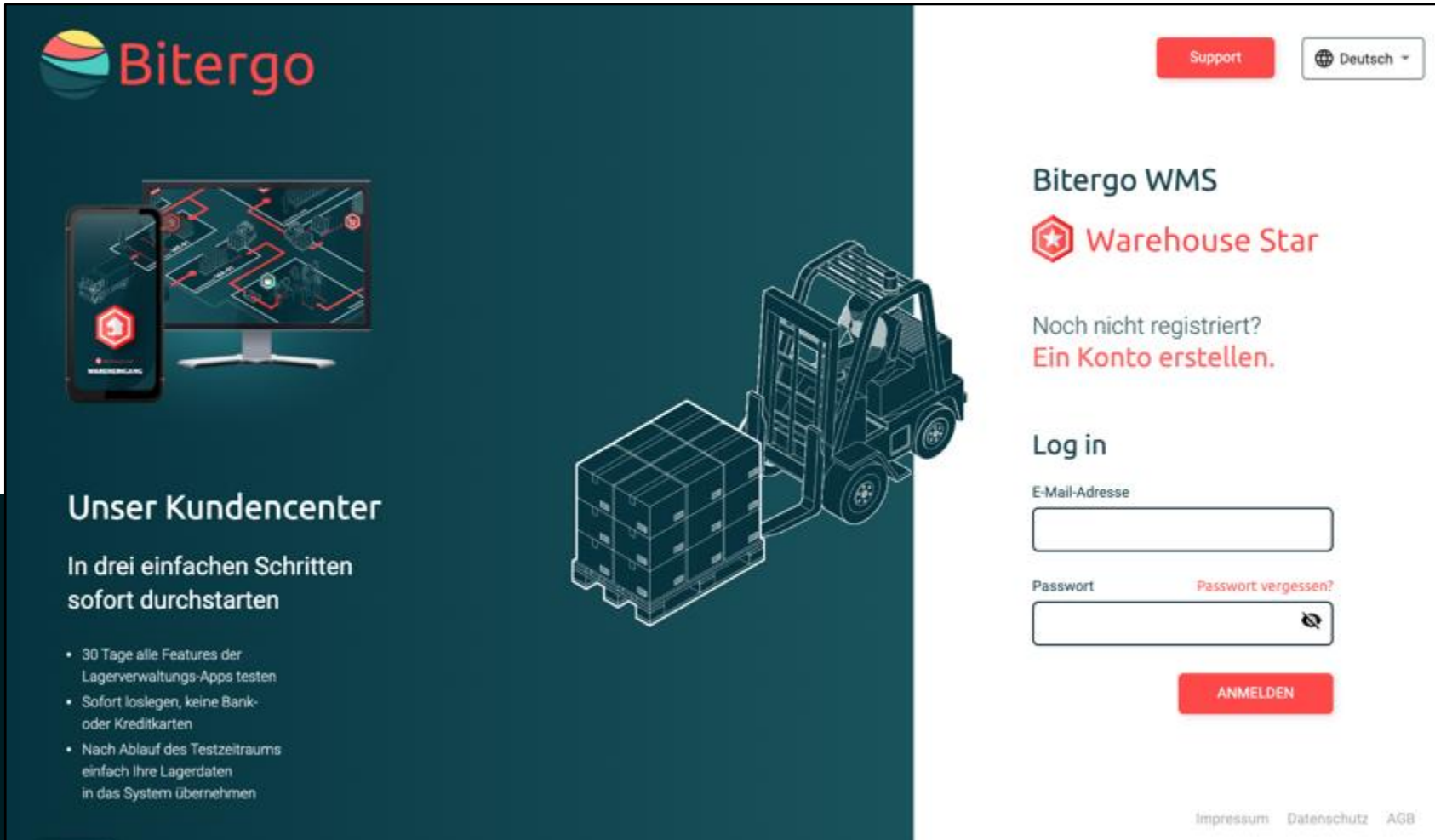
We have been using the Bitergo apps for over 4 years to optimize the processes in our warehouse. All processes – from goods receipt, storage and picking to goods issue – are handled with the help of the apps.... We are really very satisfied with Bitergo WMS.

Jürgen Nehmer - Spedition Nüllig & Haß



Test for 30 days for free

warehouse management



The image shows a promotional banner for Bitergo WMS Warehouse Star. On the left, there is a dark teal background with the Bitergo logo at the top left. Below the logo, there is an illustration of a smartphone and a computer monitor displaying a warehouse management interface. To the right of these devices is a stylized illustration of a forklift carrying a pallet of boxes. Below the illustration, the text reads "Unser Kundencenter" and "In drei einfachen Schritten sofort durchstarten". A list of bullet points follows, detailing the 30-day free trial offer. On the right side of the banner, there is a white background with a login form. At the top right of this section are "Support" and "Deutsch" buttons. The main heading is "Bitergo WMS Warehouse Star". Below this, it says "Noch nicht registriert? Ein Konto erstellen." The login section is titled "Log in" and contains two input fields: "E-Mail-Adresse" and "Passwort". There is a "Passwort vergessen?" link next to the password field and a "ANMELDEN" button below. At the bottom right of the white section are links for "Impressum", "Datenschutz", and "AGB".

Unser Kundencenter
In drei einfachen Schritten
sofort durchstarten

- 30 Tage alle Features der Lagerverwaltungs-Apps testen
- Sofort loslegen, keine Bank- oder Kreditkarten
- Nach Ablauf des Testzeitraums einfach Ihre Lagerdaten in das System übernehmen

Bitergo WMS
Warehouse Star

Noch nicht registriert?
Ein Konto erstellen.

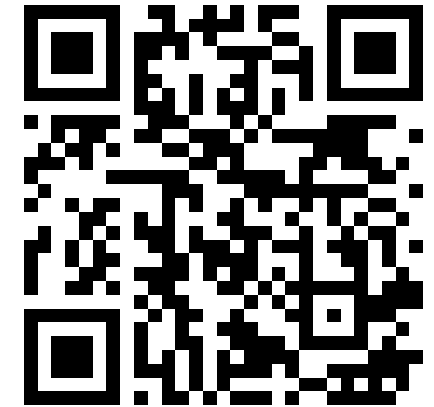
Log in

E-Mail-Adresse

Passwort [Passwort vergessen?](#)

ANMELDEN

[Impressum](#) [Datenschutz](#) [AGB](#)



Contact

Bitergo GmbH

Saarlandstraße 117
44139 Dortmund
Germany

p: +49 231 / 878008-79
m: WeCare@bitergo.de

www.bitergo.de
www.warehouse-star.de

